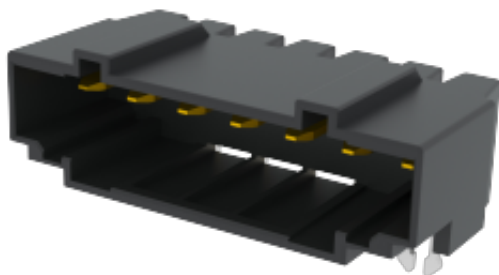


WJ9RC-5.0  
PLUG-IN TERMINAL BLOCK



PCB connector  
 Rated current: 16 A  
 Rated voltage: 300 V  
 Pitch: 5.0 mm  
 Mounting: Wave soldering



For reference only!version1.0

UL/CUL

Use Group	B	C	D
Rate Voltage [V]	300	/	300
Rated Current [A]	16	/	10
Wire Range [AWG]		/	
Dielectric Voltage-Withstand		1.6KV	

IEC

Overvoltage Category	III	III	II
Contamination Class	3	2	2
Rated Voltage [V]	160	160	320
Rated Current [A]	20	20	20
Impulse withstand voltage [KV]	4	4	4
Conductor cross section[solid/flexible] [mm <sup>2</sup> ]		/	

Material

Insulation Material	PA66
---------------------	------

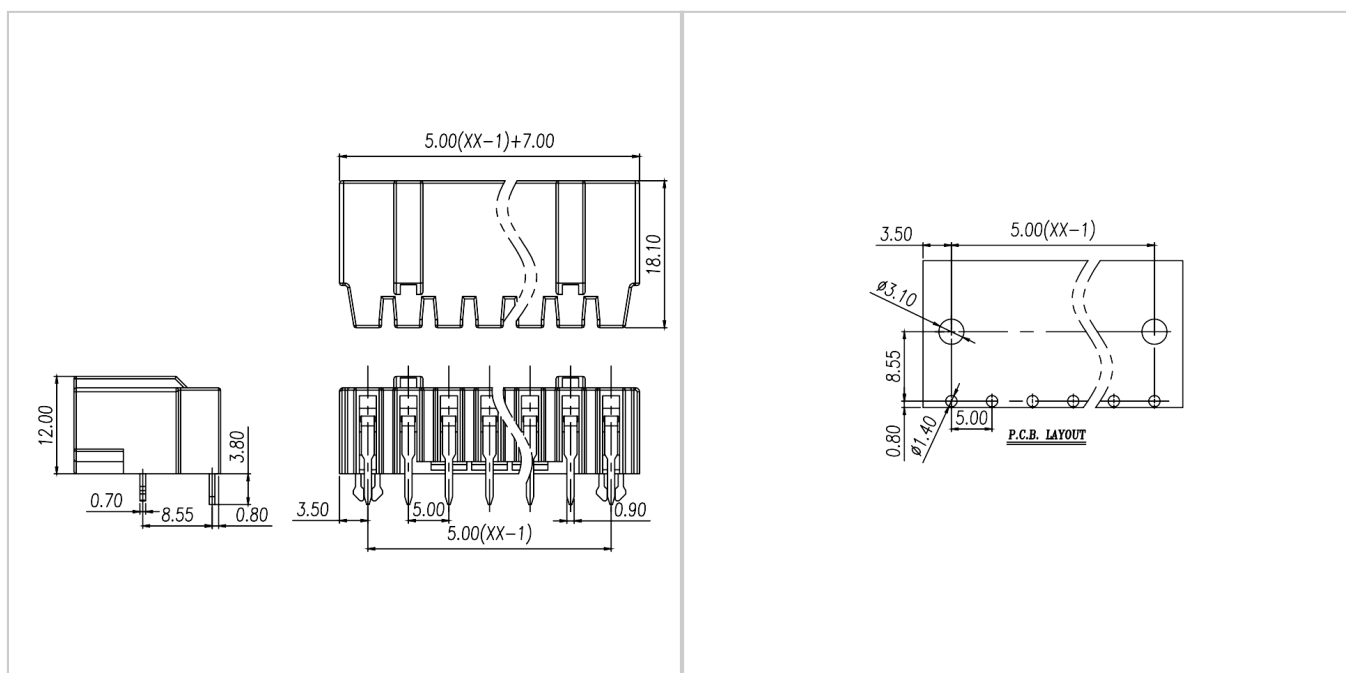
Flame retardant rating	UL94V-0
Conductor Material	Copper alloy
Plating of conductor surface	Au plated area

### Other Data

Pitch/Poles [mm]/[P]	5.0/02 , 04 , 05 , 06 , 07 , 08 , 09 , 10 , 11 , 12 , 13 , 14
Stripping Length [mm]	/
Screw/Torque(Max)[N.m]	/
Operating temperature [°C]	-40~+105
Soldering temperature	260°C
Pin dimensions [mm]	0.7*0.9
PCB Hole Diameter [mm]	Ø1.4

### Dimensions

### PCB opening diagram



### Accessories

[WJ9KS-5.0](#)