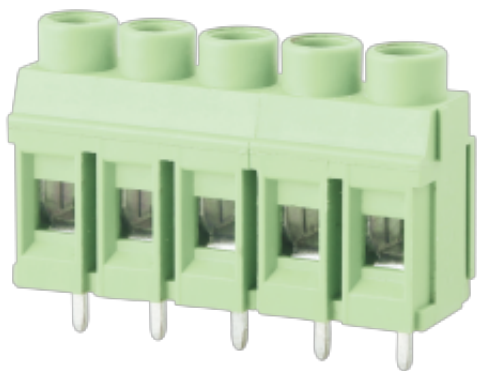


WJ750-7.5  
PCB SCREW TERMINAL BLOCK



PCB terminal block  
 Rated current: 30 A  
 Rated voltage: 300 V  
 Wire range: 26-10 AWG  
 Pitch: 7.5 mm  
 Mounting: Wave soldering



For reference only!version1.0

UL/CUL

Use Group	B	C	D
Rate Voltage [V]	300	-	300
Rated Current [A]	30	-	10
Wire Range [AWG]	26~10		
Dielectric Voltage-Withstand	1.6KV		

IEC

Overvoltage Category	III	III	II
Contamination Class	3	2	2
Rated Voltage [V]	450	630	1000
Rated Current [A]	32	32	32
Impulse withstand voltage [KV]	6	6	6
Conductor cross section[solid/flexible] [mm <sup>2</sup> ]	0.5~4.0		

Material

# WJ750-7.5

## PCB SCREW TERMINAL BLOCK



Insulation Material	PA66
Flame retardant rating	UL94V-0
Conductor Material	Copper alloy
Plating of conductor surface	Sn plated

### Other Data

Pitch/Poles [mm]/[P]	7.5/2~24
Stripping Length [mm]	7
Screw/Torque(Max)[N.m]	M3/0.5
Operating temperature [°C]	-40~+105
Soldering temperature	260°C/5S
Pin dimensions [mm]	0.8*1.0
PCB Hole Diameter [mm]	Ø1.5

### Dimensions

### PCB opening diagram

