

PCB connector  
 Rated current: 41 A  
 Rated voltage: 300 V  
 Pitch: 7.62 mm  
 Mounting: Wave soldering



For reference only!version1.0

UL/CUL

| Use Group                    | B     | C   | D   |
|------------------------------|-------|-----|-----|
| Rate Voltage [V]             | 300   | 300 | 300 |
| Rated Current [A]            | 41    | 41  | 10  |
| Wire Range [AWG]             | /     |     |     |
| Dielectric Voltage-Withstand | 1.6KV |     |     |

IEC

| Overvoltage Category                          | III | III | II   |
|---|-----|-----|------|
| Contamination Class                           | 3   | 2   | 2    |
| Rated Voltage [V]                             | 630 | 630 | 1000 |
| Rated Current [A]                             | 41  | 41  | 41   |
| Impulse withstand voltage [KV]                | 6   | 6   | 6    |
| Conductor cross section[solid/flexible] [mm²] | /   |     |      |

Material

|                     |      |
|---------------------|------|
| Insulation Material | PA66 |
|---------------------|------|

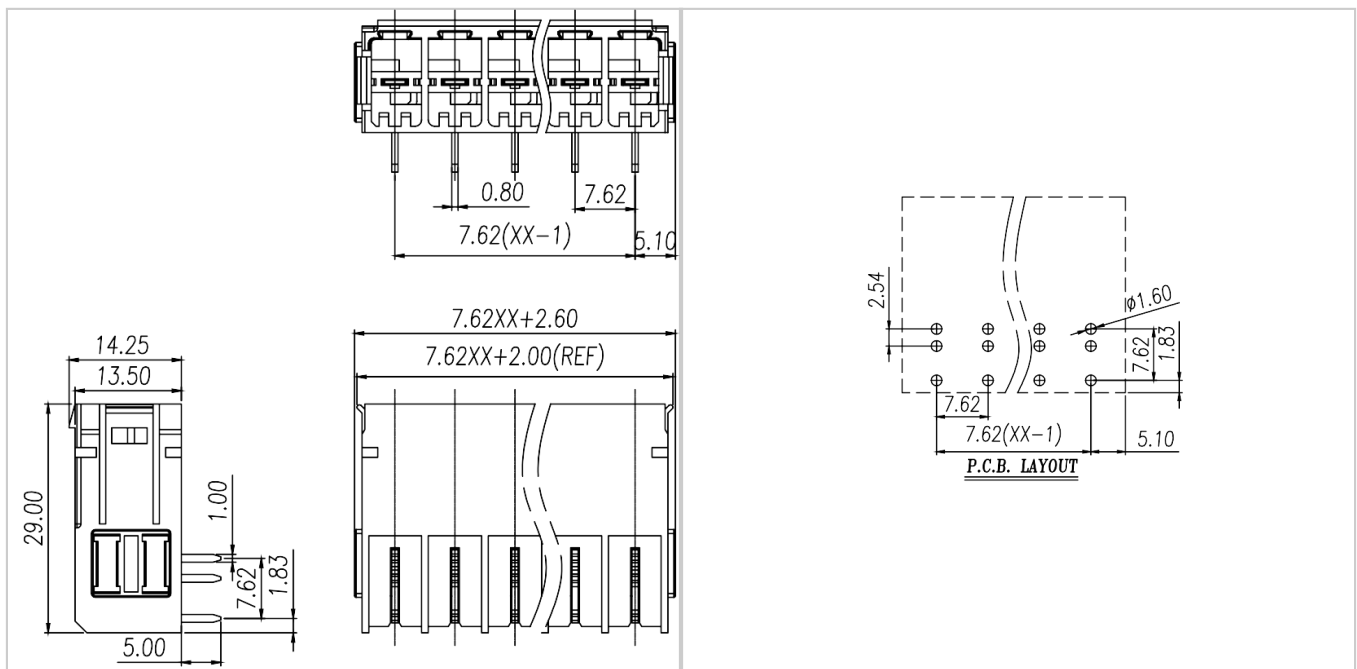
|                              |              |
|------------------------------|--------------|
| Flame retardant rating       | UL94V-0      |
| Conductor Material           | Copper alloy |
| Plating of conductor surface | Sn plated    |

Other Data

|                            |           |
|----------------------------|-----------|
| Pitch/Poles [mm]/[P]       | 7.62/2-12 |
| Stripping Length [mm]      | /         |
| Screw/Torque(Max)[N.m]     | /         |
| Operating temperature [°C] | -40~+105  |
| Soldering temperature      | 260°C/5S  |
| Pin dimensions [mm]        | 0.8*1.0   |
| PCB Hole Diameter [mm]     | Ø1.6      |

Dimensions

PCB opening diagram



Accessories

WJ3EDGRH-7.62  
PLUG-IN TERMINAL BLOCK

---



[WJ3EDGKH-7.62](#)