



PCB connector
 Rated current: 15 A
 Rated voltage: 300 V
 Pitch: 5.0 mm/5.08 mm
 Mounting: Reflow soldering



For reference only!version1.0

UL/CUL

Use Group	B	C	D
Rate Voltage [V]	300	-	300
Rated Current [A]	15	-	10
Wire Range [AWG]	/		
Dielectric Voltage-Withstand	1.6KV		

IEC

Overvoltage Category	III	III	II
Contamination Class	3	2	2
Rated Voltage [V]	250	320	400
Rated Current [A]	12	12	12
Impulse withstand voltage [KV]	4	4	4
Conductor cross section[solid/flexible] [mm ²]	/		

Material

Insulation Material	LCP
---------------------	-----



[WJ2EDGKM-5.0/5.08](#)



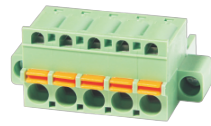
[WJ2EDGKAM-5.0/5.08](#)



[WJ2EDGKBM-5.0/5.08](#)



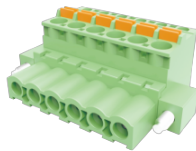
[WJ2EDGKCM-5.0/5.08](#)



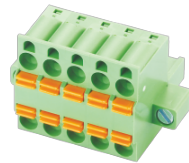
[WJ2EDGKDM-5.0/5.08](#)



[WJ2EDGKDBM-5.0/5.08](#)



[WJ2EDGKDBM-5.0/5.08](#)



[WJ2EDGKDHM-5.08](#)



[WJ2EDGKHM-5.08](#)



[WJ2EDGKAHM-5.08](#)



[WJ2EDGKZM-5.0/5.08](#)



[WJ2EDGKLM-5.0/5.08](#)