



PCB connector  
 Rated current: 15 A  
 Rated voltage: 300 V  
 Wire range: 28-12 AWG  
 Pitch: 5.0/5.08 mm



For reference only!version1.0

### UL/CUL

| Use Group                    | B     | C | D   |
|------------------------------|-------|---|-----|
| Rate Voltage [V]             | 300   | - | 300 |
| Rated Current [A]            | 15    | - | 10  |
| Wire Range [AWG]             | 28-12 |   |     |
| Dielectric Voltage-Withstand | 1.6KV |   |     |

### IEC

| Overvoltage Category                                       | III     | III | II  |
|--|---------|-----|-----|
| Contamination Class  | 3       | 2   | 2   |
| Rated Voltage [V]  | 250     | 320 | 630 |
| Rated Current [A]  | 12      | 12  | 12  |
| Impulse withstand voltage [KV]                             | 4       | 4   | 4   |
| Conductor cross section[solid/flexible] [mm <sup>2</sup> ] | 0.2-2.5 |     |     |

### Material

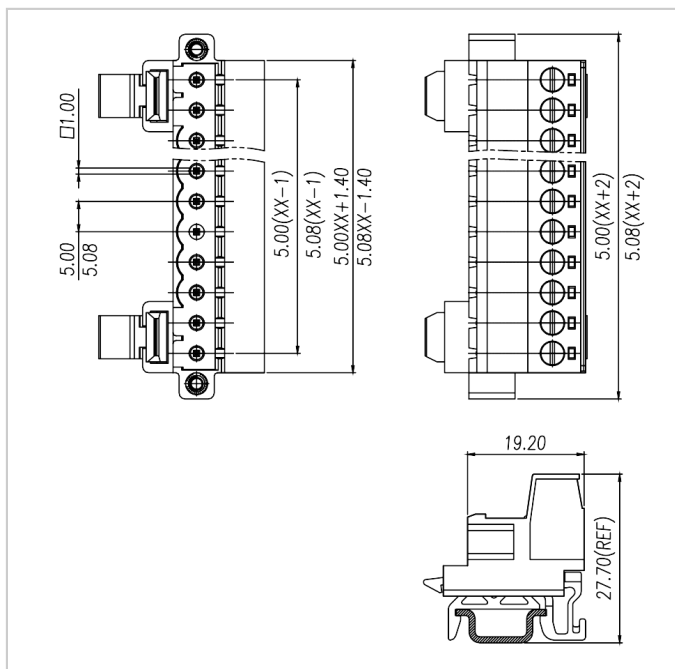
|                     |      |
|---------------------|------|
| Insulation Material | PA66 |
|---------------------|------|

|                              |              |
|------------------------------|--------------|
| Flame retardant rating       | UL94V-0      |
| Conductor Material           | Copper alloy |
| Plating of conductor surface | Sn plated    |

Other Data

|                            |                 |
|----------------------------|-----------------|
| Pitch/Poles [mm]/[P]       | 5.0 , 5.08/2-24 |
| Stripping Length [mm]      | 7-8             |
| Screw/Torque(Max)[N.m]     | M3/0.5          |
| Operating temperature [°C] | -40~+105        |
| Soldering temperature      | /               |
| Pin dimensions [mm]        | /               |
| PCB Hole Diameter [mm]     | /               |

Dimensions



Accessories



[WJ2EDGKM-5.0/5.08](#)



[WJ2EDGKAM-5.0/5.08](#)



[WJ2EDGKBM-5.0/5.08](#)



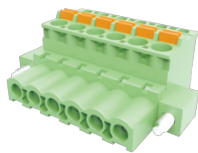
[WJ2EDGKCM-5.0/5.08](#)



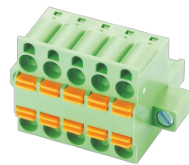
[WJ2EDGKDM-5.0/5.08](#)



[WJ2EDGKDAM-5.0/5.08](#)



-  
[WJ2EDGKDBM-5.0/5.08](#)



-  
[WJ2EDGKDHM-5.08](#)

[WJ2EDGKZM-5.0/5.08](#)

[WJ2EDGKLM-5.0/5.08](#)