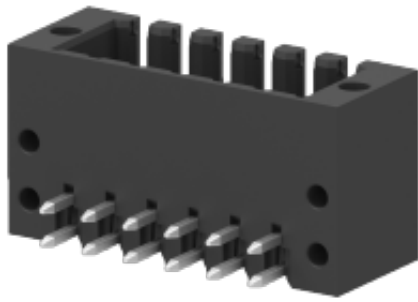


WJ15EDGRHSM-THR-3.5  
PLUG-IN TERMINAL BLOCK



PCB connector  
 Rated current: 7 A  
 Rated voltage: 150 V  
 Pitch: 3.5 mm  
 Mounting: Reflow soldering



For reference only!version1.0

UL/CUL

Use Group	B	C	D
Rate Voltage [V]	150	-	-
Rated Current [A]	7	-	-
Wire Range [AWG]	/		
Dielectric Voltage-Withstand	1.3KV		

IEC

Overvoltage Category	III	III	II
Contamination Class	3	2	2
Rated Voltage [V]	80	125	250
Rated Current [A]	10	10	10
Impulse withstand voltage [KV]	2.5	2.5	2.5
Conductor cross section[solid/flexible] [mm <sup>2</sup> ]	/		

Material

Insulation Material	LCP
---------------------	-----

# WJ15EDGRHSM-THR-3.5

## PLUG-IN TERMINAL BLOCK



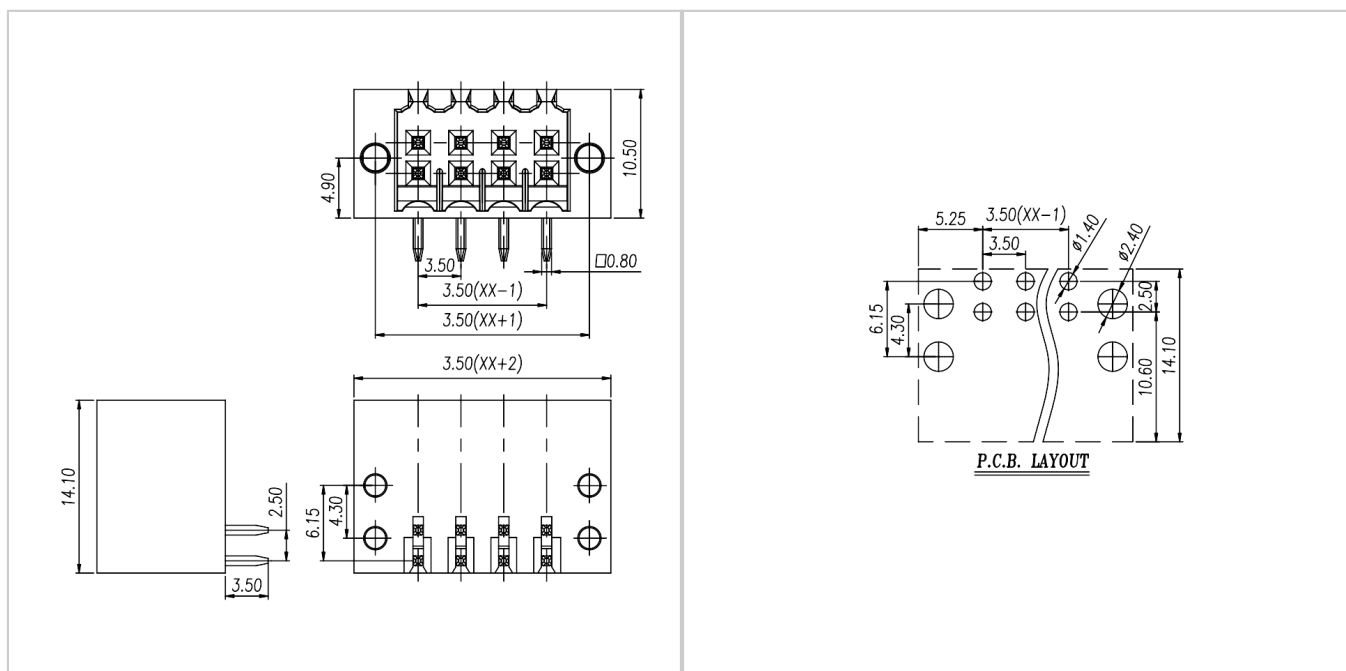
Flame retardant rating	UL94V-0
Conductor Material	Copper alloy
Plating of conductor surface	Sn plated

### Other Data

Pitch/Poles [mm]/[P]	3.5/2*2~2*24
Stripping Length [mm]	/
Screw/Torque(Max)[N.m]	/
Operating temperature [°C]	-40~+130
Soldering temperature	285°C/10S
Pin dimensions [mm]	0.8*0.8
PCB Hole Diameter [mm]	Ø1.4

### Dimensions

### PCB opening diagram

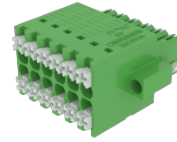


### Accessories

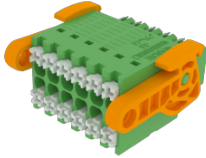
WJ15EDGRHSM-THR-3.5  
PLUG-IN TERMINAL BLOCK



[WJ15EDGKSHM-3.5](#)



[WJ15EDGKNHBM-3.5](#)



[WJ15EDGKNHBG-3.5](#)