

WJ15EDGRHSC-3.5
PLUG-IN TERMINAL BLOCK



PCB connector
 Rated current: 7 A
 Rated voltage: 150 V
 Pitch: 3.5 mm
 Mounting: Wave soldering



For reference only!version1.0

UL/CUL

Use Group	B	C	D
Rate Voltage [V]	150	-	-
Rated Current [A]	7	-	-
Wire Range [AWG]	/		
Dielectric Voltage-Withstand	1.3KV		

IEC

Overvoltage Category	III	III	II
Contamination Class	3	2	2
Rated Voltage [V]	80	125	250
Rated Current [A]	10	10	10
Impulse withstand voltage [KV]	2.5	2.5	2.5
Conductor cross section[solid/flexible] [mm ²]	/		

Material

Insulation Material	PA66
---------------------	------

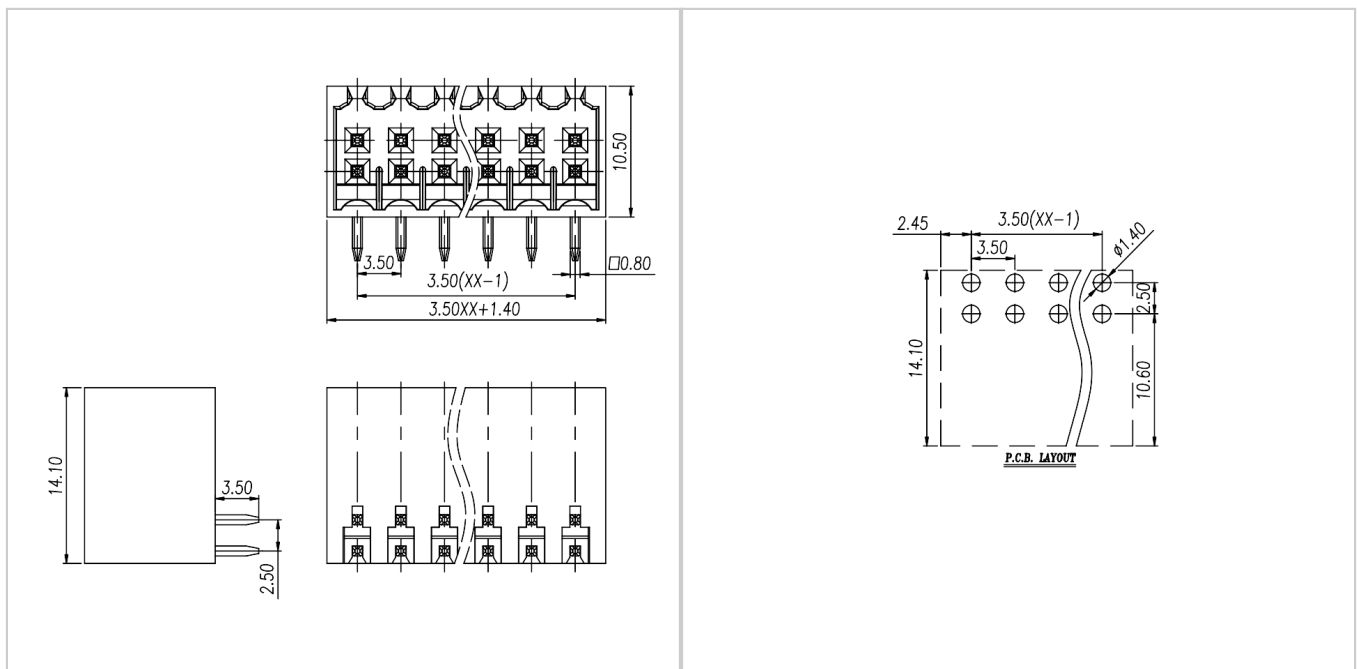
Flame retardant rating	UL94V-0
Conductor Material	Copper alloy
Plating of conductor surface	Sn plated

Other Data

Pitch/Poles [mm]/[P]	3.5/2*2-2*24
Stripping Length [mm]	/
Screw/Torque(Max)[N.m]	/
Operating temperature [°C]	-40~+105
Soldering temperature	260°C/5S
Pin dimensions [mm]	0.8*0.8
PCB Hole Diameter [mm]	Ø1.4

Dimensions

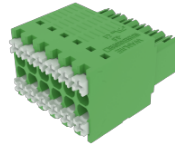
PCB opening diagram



Accessories



[WJ15EDGKSH-3.5](#)



[WJ15EDGKNHB-3.5](#)