

WJ15EDGKSH-3.5  
PLUG-IN TERMINAL BLOCK



PCB connector  
 Rated current: 7 A  
 Rated voltage: 150 V  
 Wire range: 28-18 AWG  
 Pitch: 3.5 mm



For reference only!version1.0

UL/CUL

Use Group	B	C	D
Rate Voltage [V]	150	-	150
Rated Current [A]	7	-	7
Wire Range [AWG]	28-18		
Dielectric Voltage-Withstand	1.3KV		

IEC

Overvoltage Category	III	III	II
Contamination Class	3	2	2
Rated Voltage [V]	80	160	200
Rated Current [A]	10	10	10
Impulse withstand voltage [KV]	1.5	2.5	2.5
Conductor cross section[solid/flexible] [mm <sup>2</sup> ]	0.2-1.0		

Material

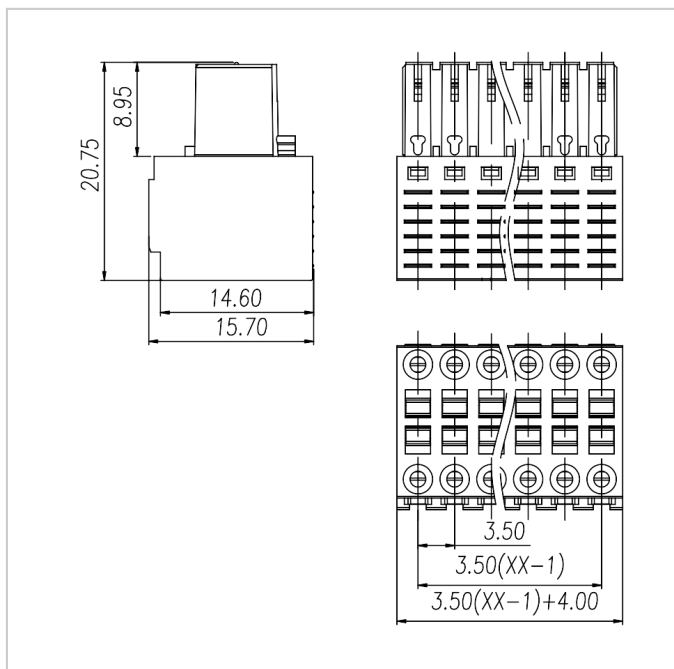
Insulation Material	PA66
---------------------	------

Flame retardant rating	UL94V-0
Conductor Material	Copper alloy
Plating of conductor surface	Sn plated

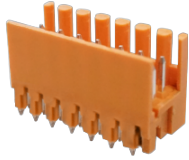
### Other Data

Pitch/Poles [mm]/[P]	3.5/2*2-2*24
Stripping Length [mm]	7-8
Screw/Torque(Max)[N.m]	/
Operating temperature [°C]	-40~+105
Soldering temperature	/
Pin dimensions [mm]	/
PCB Hole Diameter [mm]	/

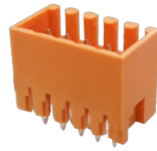
### Dimensions



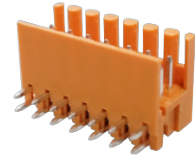
### Accessories



[WJ15EDGVHS-3.5](#)



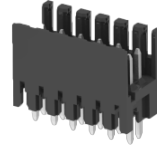
[WJ15EDGVHSC-3.5](#)



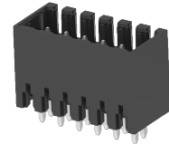
[WJ15EDGRHS-3.5](#)



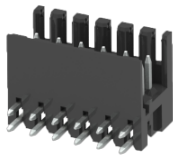
[WJ15EDGRHSC-3.5](#)



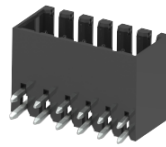
[WJ15EDGVHS-THR-3.5](#)



[WJ15EDGVHSC-THR-3.5](#)



[WJ15EDGRHS-THR-3.5](#)



[WJ15EDGRHSC-THR-3.5](#)