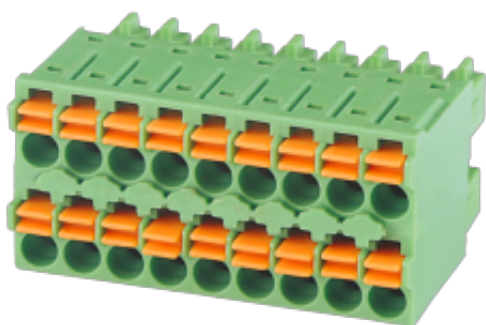


WJ15EDGKN-B-3.5-1000A  
 PLUG-IN TERMINAL BLOCK



PCB connector  
 Rated current: 8 A  
 Rated voltage: 300 V  
 Wire range: 24-16 AWG  
 Pitch: 3.5 mm  
 Connection method: Push-in spring connection



For reference only!version1.0

UL/CUL

Use Group	B	C	D
Rate Voltage [V]	300	-	300
Rated Current [A]	8	-	8
Wire Range [AWG]	24-16		
Dielectric Voltage-Withstand	1.6VK		

IEC

Overvoltage Category	III	III	II
Contamination Class	3	2	2
Rated Voltage [V]	160	160	320
Rated Current [A]	8	8	8
Impulse withstand voltage [KV]	2.5	2.5	2.5
Conductor cross section[solid/flexible] [mm <sup>2</sup> ]	0.2-1.5		

Material

# WJ15EDGKN-B-3.5-1000A

## PLUG-IN TERMINAL BLOCK

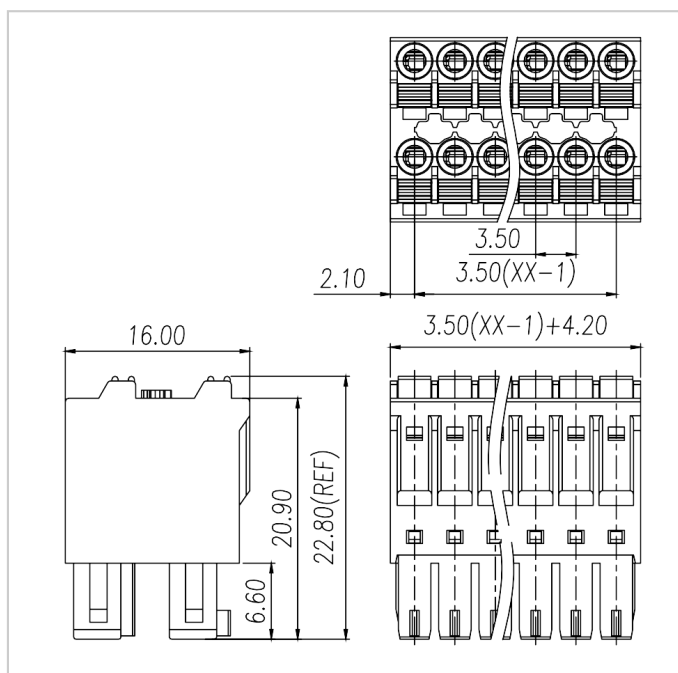


Insulation Material	PA66
Flame retardant rating	UL94V-0
Conductor Material	Copper alloy
Plating of conductor surface	Sn plated

### Other Data

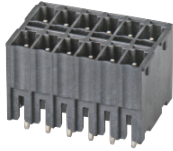
Pitch/Poles [mm]/[P]	3.5/2*2-2*24
Stripping Length [mm]	9-10
Screw/Torque(Max)[N.m]	-
Operating temperature [°C]	-40~105
Soldering temperature	/
Pin dimensions [mm]	/
PCB Hole Diameter [mm]	/

### Dimensions



### Accessories

WJ15EDGKN-B-3.5-1000A  
PLUG-IN TERMINAL BLOCK



[WJ15EDGVHB-THT-3.5/3.81](#)



[WJ15EDGRHB-THT-3.5/3.81](#)