

For reference only!version1.0

UL/CUL

Use Group	B	C	D
Rate Voltage [V]	300	-	300
Rated Current [A]	15	-	10
Wire Range [AWG]	/		
Dielectric Voltage-Withstand	1.6KV		

IEC

Overvoltage Category	III	III	II
Contamination Class	3	2	2
Rated Voltage [V]	320	320	630
Rated Current [A]	12	12	10
Impulse withstand voltage [KV]	4	4	4
Conductor cross section[solid/flexible] [mm²]	/		

Material

Insulation Material	PA66
Flame retardant rating	UL94V-0

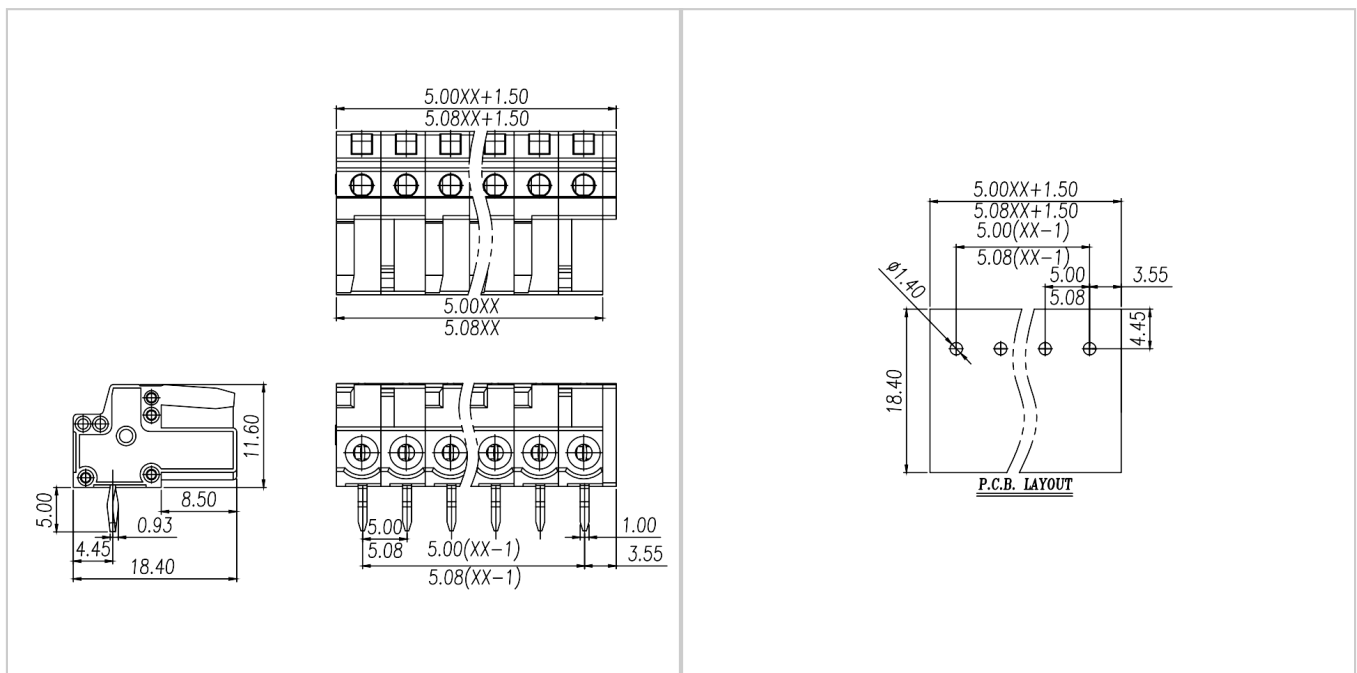
Conductor Material	Copper alloy
Plating of conductor surface	Sn plated

Other Data

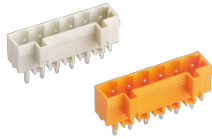
Pitch/Poles [mm]/[P]	5.0 , 5.08/2-24
Stripping Length [mm]	/
Screw/Torque(Max)[N.m]	/
Operating temperature [°C]	-40~+105
Soldering temperature	260°C/5S
Pin dimensions [mm]	0.6*1.0
PCB Hole Diameter [mm]	Ø1.4

Dimensions

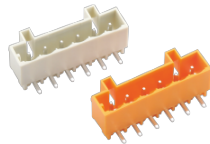
PCB opening diagram



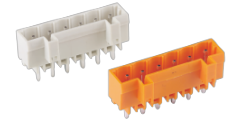
Accessories



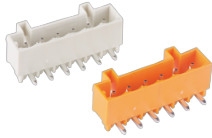
[WJ0402/0502-05XX](#)



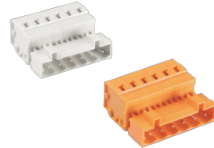
[WJ0402/0502-06XX](#)



[WJ0402/0502-07XX](#)



[WJ0402/0502-08XX](#)



[WJ0403/0503-04XX](#)

[WJ0403/0503-05XX](#)

[WJ0403/0503-06XX](#)