

MCS terminal Block
 Rated current: 15 A
 Rated voltage: 300 V
 Pitch: 5.0 mm/5.08 mm



For reference only!version1.0

UL/CUL

Use Group	B	C	D
Rate Voltage [V]	300	-	300
Rated Current [A]	15	-	10
Wire Range [AWG]	28-12		
Dielectric Voltage-Withstand	1.6KV		

IEC

Overvoltage Category	III	III	II
Contamination Class	3	2	2
Rated Voltage [V]	320	320	630
Rated Current [A]	12	12	12
Impulse withstand voltage [KV]	4	4	4
Conductor cross section[solid/flexible] [mm²]	0.25-2.5		

Material

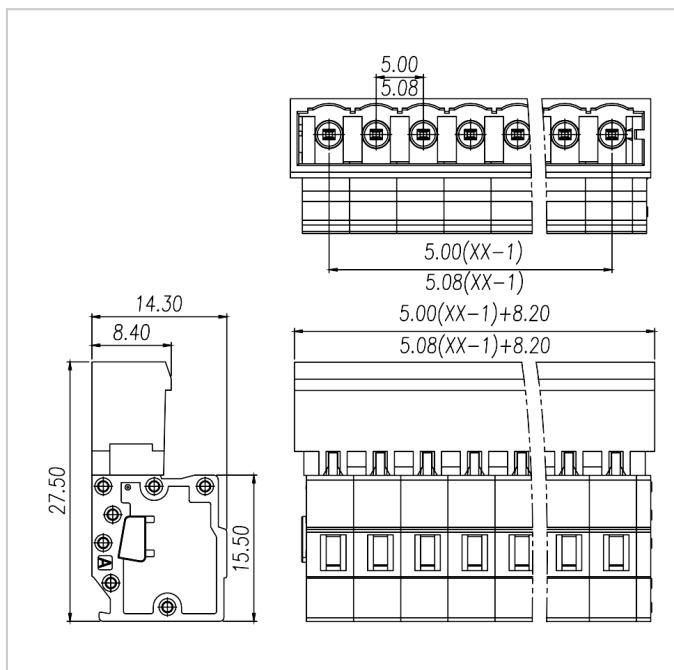
Insulation Material	PA66
Flame retardant rating	UL94V-0

Conductor Material	Copper alloy
Plating of conductor surface	Sn plated

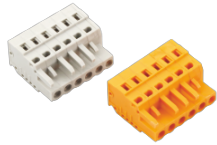
Other Data

Pitch/Poles [mm]/[P]	5.0 , 5.08/2-24
Stripping Length [mm]	8-9
Screw/Torque(Max)[N.m]	/
Operating temperature [°C]	-40~+105
Soldering temperature	/
Pin dimensions [mm]	/
PCB Hole Diameter [mm]	/

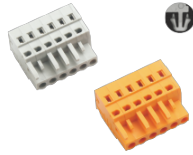
Dimensions



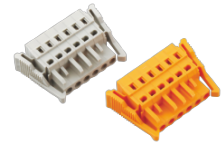
Accessories



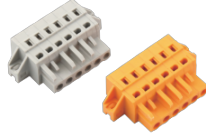
[WJ0401/0501-01XX](#)



[WJ0401/0501-03XX](#)



[WJ0401/0501-05XX](#)



[WJ0401/0501-07XX](#)

[WJ0405/0505-01XX](#)

[WJ0405/0505-03XX](#)