

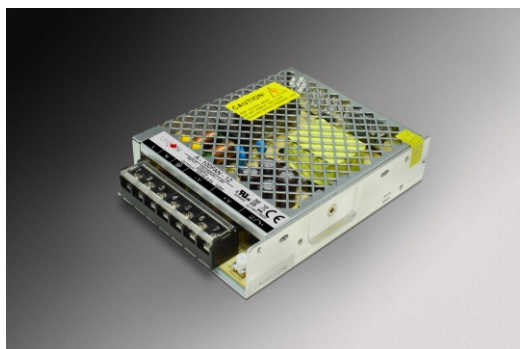
S.M.P.S

Enclosed Switching Power Supply

Low Cost & Slim Type

100FAN Series

100W SINGLE OUTPUT



- ▷ Constant voltage design
- ▷ Wide input range AC90~264V input
- ▷ No load power consumption<0.5W
- ▷ Protections: short circuit/over load/over voltage
- ▷ Cooling by free air convection
- ▷ 100% full load burn-in test
- ▷ Suitable for LED lighting and industrial applications
- ▷ Safety standards :
EN60950-1/K61347-1,K61347-2-13
- ▷ EMC standards :
EN55022/K00015,K61547,K61000-4-2,3,4,5,6,11
- ▷ 3 years warranty



ITEM		A-100FAN-12	A-100FAN-24
INPUT	VOLTAGE RANGE	AC90~264V	
	FREQUENCY RANGE	47~63Hz	
	EFFICIENCY(typ.)	87%	89%
	AC CURRENT(max.)	1.9A/115VAC	1.2A/230VAC
	INRUSH CURRENT(typ.)	50A/230VAC	
	LEAKAGE CURRENT	<0.75mA / 240VAC	
OUTPUT	DC VOLTAGE	12V	24V
	RATED CURRENT	8.5A	4.5A
	RATED POWER	100W	100W
	RIPPLE&NOISE(max.)	150mVp-p	200mVp-p
	VOLTAGE ADJ. RANGE	±5%	
	VOLTAGE ACCURACY	±1.0%	
	LINE REGULATION	±1.0%	
	LOAD REGULATION	±1.0%	
	SETUP,RISE TIME	500ms,30ms/230VAC 100% load	
	HOLD UP TIME(typ.)	30ms/230VAC 100% Load	
PROTEC-TION	SHORT CIRCUIT	Hiccup mode ; recovers automatically after fault condition is removed	
	OVER LOAD	120~150% of rated output	
	OVER VOLTAGE	120~140% of rated output	
ISOLA-TION	WITHSTAND VOLTAGE	I/P-O/P:AC3KV, I/P-F.G:AC2KV, O/P-F.G:AC0.5KV	
	ISOLATION RESISTANCE	I/P-O/P, I/P-F.G, O/P-F.G:DC500V 100Mohms(At room temp. & humid.)	
ENVIRON-MENT	WORKING TEMP.&HUMID.	-30~+70℃ (Refer to "DERATING CURVE"),20~95%RH	
	STORAGE TEMP.&HUMID.	-40~+80℃,10~95%RH	
	VIBRATION	10~500Hz, 5G 10min./1cycle, period for 60min. each along X, Y, Z axes	
OTHERS	LIFETIME	380,000 hours(25℃)	
	DIMENSION/WEIGHT	129*97*30mm(L*W*H)/0.33Kg	

NOTE

- * In order to extend the lifetime, it is recommended to configure the load no more than 30% of the remaining allowance. For example: the power of the device requires 100W, then use the power of less than 130W.
- * Ripple test method: 20MHz oscilloscope in power output terminal test, oscilloscope probe wire length is not more than 12mm, and input parallel 47uF electrolytic capacitors and 0.1uF high frequency capacitance probe.

